



LIGHTPLANE 3.5R

LP3.5R | RECESSED

STANDARD SIZES

3.5" Aperture
Configurable in linear shapes and straight run sections
Compatible with Drywall, T-Grid, Slot, and Armstrong® Techzone

LAMPING

LED - 80/90 CRI - 3000K/3500K/4000K
Output Options: LOW/MED/HI/DECOR/Tunable White/RGB/RGB+W
Dimming down to 0%
Accent Downlights Available (800/1000/1500LM Output Options)

FINISH

White, Black, Silver, Brass, RAL Classic Colors

CONSTRUCTION

Industrial Strength Extruded 6061 Aluminum





PRODUCT SUBMITTAL WORKSHEET

SAMPLE PRODUCT CODE

LP3.5RT – DRY – SQ5 – HI/90/3500 – 0/10V/1% – EXT – DL1000/80/3500/25 – HEXSNT – 0/10V/1% – 1 – AL – UNV – EMB/1 – OS/3

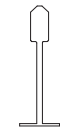
1 2 3 4 5 6 7A 7B 7C 7D 8 9 10 11 12 13A 13B

1. BASE MODEL (CHOOSE ONE)

- LP3.5RT** **QS** 3.5" Trimmed with Flush Lens
- LP3.5RTDL** **QS** 3.5" Trimmed with Drop (Reveal) Lens (Not compatible with Accent Downlight)
- LP3.5RTRL** **QS** 3.5" Trimmed with Regressed Lens
- LP3.5RMUD** **QS** 3.5" Trimless, Mud-In with Flush Lens
- LP3.5RHF** **QS** 3.5" Trimless, Hidden-Flange with Flush Lens
- LP3.5RPF** **QS** 3.5" Perimeter, Flush-Mount (skip step 2 – Ceiling Type, fixture housing/dimensions remain the same for all ceiling types)
- LP3.5RPR** **QS** 3.5" Perimeter, Regressed-Mount (skip step 2 – Ceiling Type, fixture housing/dimensions remain the same for all ceiling types)

2. CEILING TYPE (CHOOSE ONE – ADDITIONAL CEILING TYPES MAY BE AVAILABLE, CONSULT ALW)

- DRY** **QS** Drywall (available for LP3.5RT, LP3.5RTDL, and LP3.5RMUD)
- TGRID** **QS** T-Grid (available for LP3.5RT, LP3.5RTDL, LP3.5RHF, and LP3.5RTRL)
- SLOT** **QS** Slot (available for LP3.5RT, LP3.5RTDL, LP3.5RHF, and LP3.5RTRL)
- ATZ/TGRID** **QS** Armstrong® Techzone T-Grid (available for LP3.5RT, and LP3.5RTDL)
- ATZ/SLOT** **QS** Armstrong® Techzone Slot (available for LP3.5RT, and LP3.5RTDL)



TGRID

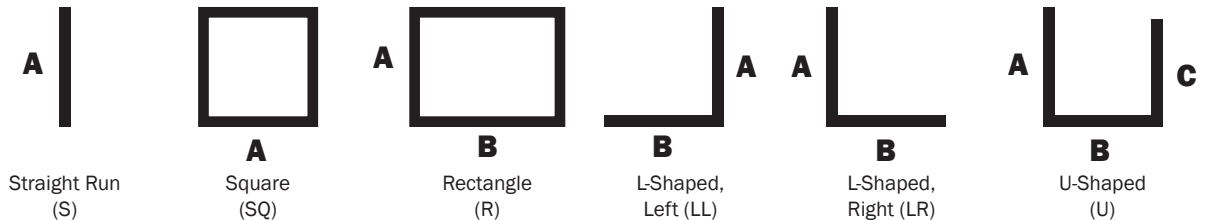


SLOT

3. SHAPE/LENGTH (CHOOSE ONE & ENTER LENGTH IN FEET – FOR CUSTOM ANGLES, CONTACT ALW)

- S__** **QS** Individual/Straight Run Section (enter length, ex. S5)
- SQ__** **QS** Square Configuration (enter side length A, ex: SQ5)
- R__** **QS** Rectangular Configuration (enter side lengths A and B, ex. R5-7)
- LL__** **QS** L-Shaped, Left Configuration (enter side lengths A and B, ex. LL5-7)
- LR__** **QS** L-Shaped, Right Configuration (enter side lengths A and B, ex. LR5-7)
- U__** **QS** U-Shaped Configuration (enter side lengths A, B, and C, ex. U5-7-4)

*Lengths are nominal and may vary based on lamping and other specification selections. Consult ALW when exact lengths are required.



QS = QuickShip-qualifying option. For the entire luminaire configuration to be QuickShip-eligible, ALL options specified in the configuration must be ones notated with "QS". NOTE: Maximum 800 ft. of QuickShip-eligible product per order.

SS101518-A.0



4. LED LAMPING — PRIMARY (CHOOSE ONE UNDER A, B, & C, AS NECESSARY)

A. OUTPUT

- QS LOW**
- QS MED**
- QS HI**
- DECOR**
- TUNE**
- RGB**
- RGBW** (80CRI, 4000K White)

B. CRI¹

- QS 80**
- 90**

C. CCT²

- QS 3000K**
- QS 3500K**
- QS 4000K**

DELIVERED LUMENS (LM/FT)	WATTS (W/FT)	EFFICACY (LM/W)
See page 7 for complete details.		Up to 98 lm/W

¹CRI not applicable for DECOR, TUNE, RGB, or RGBW lamping.

²CCT not applicable for TUNE, RGB, or RGBW lamping.

5. DRIVER — PRIMARY (CHOOSE ONE)

- 0/10V/S** **QS** 0-10V dimming down to 5% (Standard Dimming — Down to 10% for DECOR and TUNE lamping)
- 0/10V/1%** **QS** 0-10V dimming down to 1%
- 0/10V/0%** 0-10V premium dimming down to 0%
- DALI** DALI flicker-free dimming down to 0%
- DMX** DMX flicker-free dimming down to 0% (Recommended for RGB or RGBW lamping)
- ECOSYS1** **QS** Lutron Hi-Lume 1% EcoSystem, constant current or constant voltage
- ECOSYS5** Lutron 5-Series 5% EcoSystem, constant current (Compatible only with LOW, MED, and HI lamping)

*Driver specifications provided upon request to assist with control system integration.

6. LENS — PRIMARY (CHOOSE ONE)

- EXT** **QS** Extra diffuse
- EXT/ASY/LED** **QS** Extra diffuse with asymmetric distribution, flush (available with LP3.5RT, LP3.5RMUD, and LP3.5RHF)

7. ACCENT — DOWNLIGHT (CHOOSE NONE OR ONE UNDER A, C, & D)

- N** **QS** None. Select when Accent Downlight Lamping is not desired.

A. SPOT

- DL800**
- DL1000**
- DL1500**

B. CRI

- 80**

C. CCT

- 3000K**
- 3500K**
- 4000K**

D. BEAM SPREAD

- 25**
- 40**

DELIVERED LUMENS (LM)	WATTS (W)	EFFICACY (LM/W)
See page 7 for complete details.		~155+

8. ACCESSORY — ACCENT DOWNLIGHT

- N** **QS** None
- HEX** Hexcell louver
- SNT** Snoot
- HEXSNT** Both Hexcell louver and Snoot



HEXCELL LOUVER

SNOOT

QS = QuickShip-qualifying option. For the entire luminaire configuration to be QuickShip-eligible, ALL options specified in the configuration must be ones notated with "QS". NOTE: Maximum 800 ft. of QuickShip-eligible product per order.

SS101518-A.0




9. DRIVER — ACCENT DOWNLIGHT (CHOOSE ONE)

- N** **QS** None. Select when Accent Downlight Lamping is not desired.
- [_____] Same as Driver — Primary (Step 5)

10. QUANTITY — ACCENT DOWNLIGHT (CHOOSE ONE)

- N** **QS** None
- ___ Enter total quantity of downlights per run length. (Maximum 1x for 2-3ft., 2x for 4-5ft., and 3x for 6-8ft.)

11. FINISH (CHOOSE ONE)

- AL** **QS** Natural Anodized Aluminum (Standard Finish)
- BK** **QS** Black Powder Coat
- BRS** Brass Metallic Powder Coat
- SV** Silver Powder Coat
- WH** **QS** White Powder Coat
- WH/AM**  White Antimicrobial Powder Coat (for healthcare environments)
- RAL_____** Specify RAL Classic Color code (ex: RAL3003) ralcolorchart.com/ral-classic

12. VOLTAGE (CHOOSE ONE)

- UNV** **QS** Universal Voltage (120VAC-277VAC)
- 347** 347 Volt (Driver options may be limited)

13. ADDITIONAL OPTIONS (OPTIONAL — CHOOSE ONE UNDER A & B IF DESIRED)

A. EMERGENCY OPTIONS

- EMB/___³** **QS** Emergency Battery (indicate quantity — each battery powers 4ft with a delivered lumen output of 1316lm)
- EMC/___³** **QS** Emergency Circuit (indicate quantity of 4ft sections to be illuminated by emergency circuit)

³For fixtures under 4ft in length, entire fixture will be illuminated with a proportional lumen output. Consult ALW for more details.

B. SENSOR OPTIONS (COMPATIBLE ONLY WITH 0-10V DRIVERS — DEFAULT QUANTITY IS 1 SENSOR PER 8FT, INDICATE ALTERNATE QUANTITY IF DESIRED)

- ENLGH/___⁴** **QS** Enlighted® remote smart sensor (occupancy, daylight, networking, and more)
- ENLGH/INT/___⁴** **QS** Enlighted® integral smart sensor (occupancy, daylight, networking, and more)
- OS/___** 0-10V remote occupancy sensor
- PH/___** 0-10V remote photocell/daylight sensor

⁴Enlighted® Gateway and Energy Manager (by others) plus programming required. Learn more at enlightedinc.com.

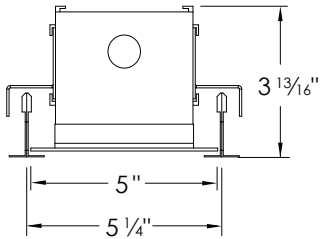
QS = QuickShip-qualifying option. For the entire luminaire configuration to be QuickShip-eligible, ALL options specified in the configuration must be ones notated with "QS". NOTE: Maximum 800 ft. of QuickShip-eligible product per order.

SS101518-A.0

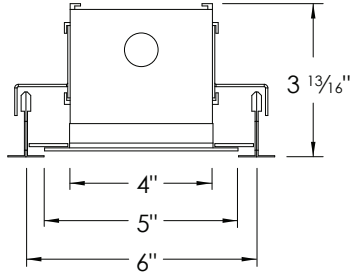


MECHANICAL DIAGRAMS – DIMENSIONS

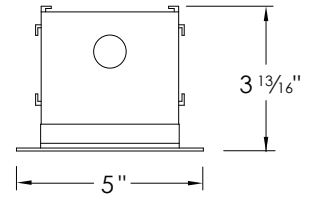
TRIMMED



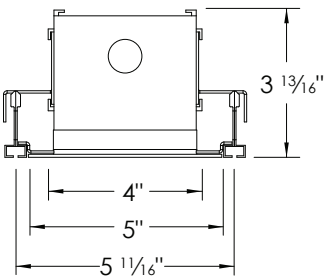
**LP3.5RT
TGRID**



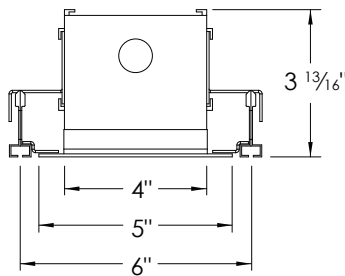
**LP3.5RT
ATZ/TGRID**



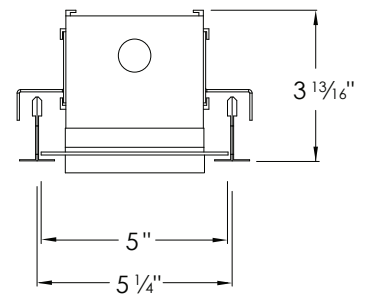
**LP3.5RT
DRY**



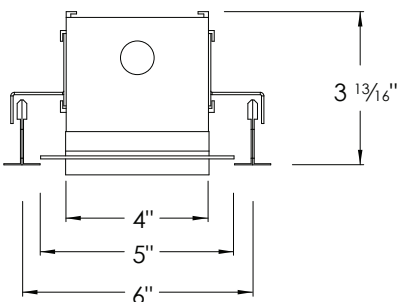
**LP3.5RT
SLOT**



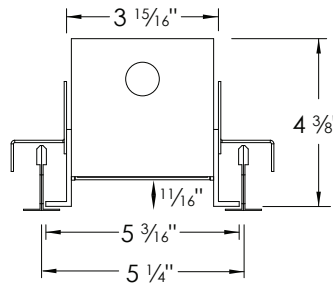
**LP3.5RT
ATZ/SLOT**



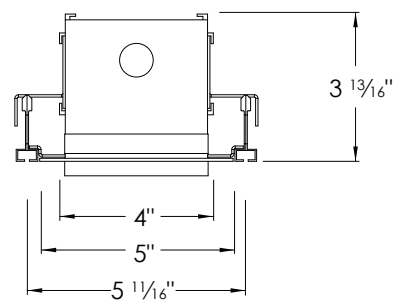
**LP3.5RTDL
TGRID**



**LP3.5RTDL
ATZ/TGRID**



**LP3.5RTRL
TGRID**



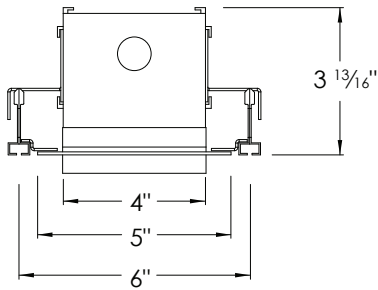
**LP3.5RTDL
SLOT**

SS101518-A.0

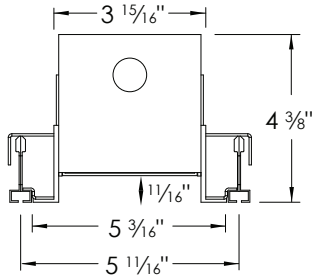


MECHANICAL DIAGRAMS – DIMENSIONS (CONT.)

TRIMMED (CONT.)

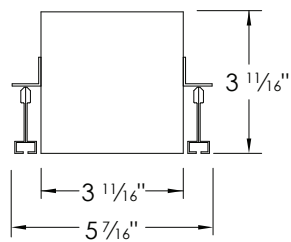


**LP3.5RT
ATZ/SLOT**

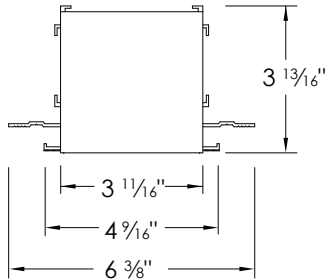


**LP3.5RTRL
SLOT**

TRIMLESS

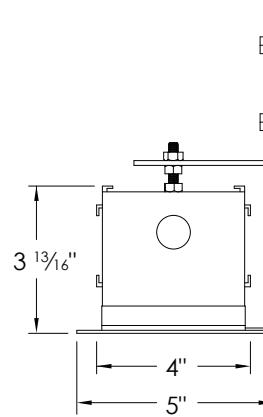


**LP3.5RHF
TGRID AND SLOT**

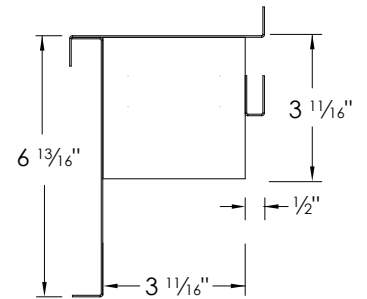


**LP3.5RMUD
DRY**

PERIMETER



LP3.5RPF



LP3.5RPR



PERFORMANCE DETAILS – PRIMARY LAMPING

OUTPUT	DELIVERED LUMENS (LM/FT)	WATTS (W/FT)	EFFICACY (LM/W)	CRI OPTIONS	CCT OPTIONS
LOW⁵	695	7.1	98	80 90	3000K 3500K 4000K
MED⁵	956	10.3	93		
HI⁵	1276	14.6	87		
DECOR	252	5.9	43	N/A	2700K-5700K
TUNE^{6,7}	574	8.2	70		
RGB⁷	Color-Changing RGB	5	N/A		80
RGBW⁷	Color-Changing RGB + 4000K White	5		4000K	

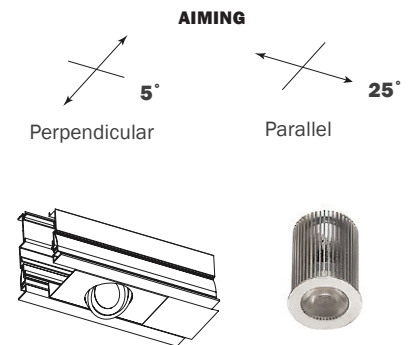
⁵Performance calculations are based on LM-79 test of MED output at 80 CRI and 4000K. LOW and HI calculations are extrapolated values.

⁶Performance calculations are extrapolated estimates for mid-range CCTs. Cooler and warmer CCTs will provide lower delivered lumens (i.e. lower lm/W, higher W/lf).

⁷DMX driver recommended; controller not included.

PERFORMANCE DETAILS – ACCENT/DOWNLIGHT LAMPING

SPOT	DELIVERED LUMENS (LM)	WATTS (W)	EFFICACY (LM/W)	CRI	CCT OPTIONS	BEAM SPREAD OPTIONS (DEGREES)
DL800	800	4.8	167	80	3000K 3500K 4000K	25 40
DL1000	1000	6.1	164			
DL1500	1500	9.7	155			



SS101518-A.0



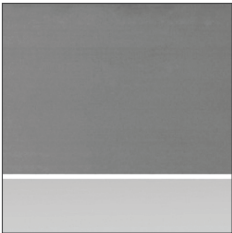
ADDITIONAL OPTIONS & SPECIFICATIONS

ELECTRICAL PERFORMANCE

LED drivers are Class 2, $L_{70} > 54,000$ hours. 80+ CRI. Luminous flux +/- 5%.

LENS OPTIONS

Extruded, twin-layered, high-impact acrylic. EXT is white and extra diffuse with minimal- to no-source visibility. Choose from flush or reveal (dropped) lens options.



FLUSH LENS



DROP (REVEAL) LENS

HOUSING

100% recyclable, extruded architectural grade 6061 aluminum with a 0.08" minimum wall thickness.

SAFETY & REGULATORY

ETL Listed (U.S. & Canada). Suitable for dry or damp locations. Conforms to UL std. 1598, Luminaires. Certified to CSA std. C22.2#250.0:2008 Ed. 3+G1;G2.

OPERATING CONDITIONS

Luminaire should be installed and operated ONLY in dry or damp locations where the ambient temperature ranges from -4 °F to 122 °F (-20 °C to 50 °C). Luminaire operation in environments outside the listed temperature range voids the warranty AND may damage the product or adversely impact lamp life, lumen output and color consistency.

WARRANTY

Limited 5-year warranty. Details: alwusa.com/warranty

INTEGRAL DOWNLIGHTS

Optional, aimable accent downlights deliver 800-1500 lumens with a beam spread of 25° or 40°. Hex cell (HEX) and snoot (SNT) accessories are also available.



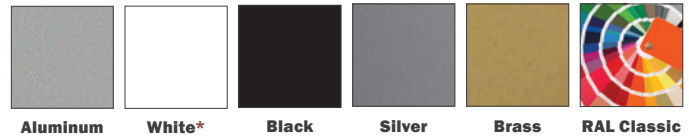
SENSOR OPTIONS

Optional, occupancy detection (OS) and/or daylight harvesting (PS) sensor available. Or upgrade to an optional Enlighted® Smart Sensor (ENLGHT) for additional capabilities. Contact ALW for details.



FINISH

Standard finish is "Ultimatte" aluminum — a smooth, clean, and durable finish achieved from a deep etch and two-step clear anodizing process. Other options are shown below.



*For healthcare environments, a white antimicrobial finish (WH/AM) is also available.