



# LIGHTPLANE 1

LP1 | SUSPENDED, WALL, SURFACE

## STANDARD SIZES

1" Aperture  
Configurable in linear shapes and straight run sections

## LAMPING

LED - Direct or Indirect - 80 CRI - 3000K/3500K/4000K  
Output Options: LOW/MED/HI/DECOR  
Dimming down to 0%

## FINISH

Aluminum, White, Black, Silver, Brass, RAL Classic Colors

## CONSTRUCTION

Industrial Strength Extruded 6061 Aluminum





# PRODUCT SUBMITTAL WORKSHEET

## SAMPLE PRODUCT CODE

**LP1SD – SQ5 – HI/80/3500 – 0/10V/S – EXT/F – AL – UNV – EMB/1 – OS/3 – COMBO – SB**  
1 2 3 4 5 6 7 8A 8B 8c

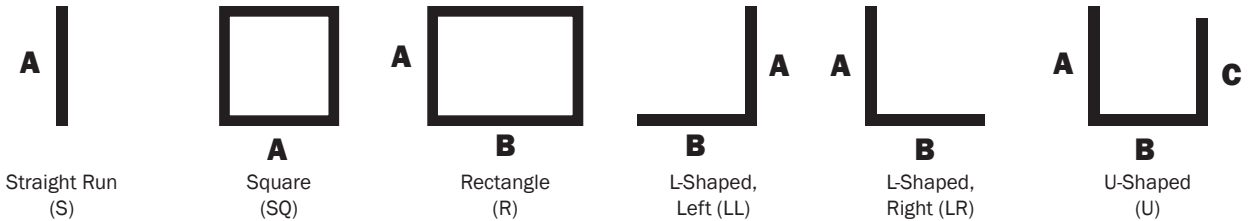
### 1. BASE MODEL (CHOOSE ONE)

- LP1SD** 1" Suspended, Direct
- LP1SI** 1" Suspended, Indirect
- LP1SMB** 1" Wall/Surface, Back-Mounted, Front-Facing
- LP1SWW** 1" Wall/Surface Mount with Adjustable Knuckle

### 2. SHAPE/LENGTH (CHOOSE ONE & ENTER LENGTH IN FEET – FOR CUSTOM ANGLES, CONTACT ALW)

- S\_\_** Individual/Straight Run Section (enter length, ex. S5)
- SQ\_\_** Square Configuration (enter side length A, ex: SQ5)
- R\_ \_** Rectangular Configuration (enter side lengths A and B, ex. R5-7)
- LL\_ \_** L-Shaped, Left Configuration (enter side lengths A and B, ex. LL5-7)
- LR\_ \_** L-Shaped, Right Configuration (enter side lengths A and B, ex. LR5-7)
- U\_ \_ \_** U-Shaped Configuration (enter side lengths A, B, and C, ex. U5-7-4)

\*Lengths are nominal and may vary based on lamping and other specification selections. Consult ALW when exact lengths are required.



### 3. LED LAMPING (CHOOSE ONE UNDER A & C)

- |                                       |   |                                       |
|---------------------------------------|---|---------------------------------------|
| <b>A. OUTPUT</b>                      | <b>B. CRI</b>                                 | <b>C. CCT</b>                         |
| <input type="checkbox"/> <b>LOW</b>   | <input checked="" type="checkbox"/> <b>80</b> | <input type="checkbox"/> <b>3000K</b> |
| <input type="checkbox"/> <b>MED</b>   |   | <input type="checkbox"/> <b>3500K</b> |
| <input type="checkbox"/> <b>HI</b>    |   | <input type="checkbox"/> <b>4000K</b> |
| <input type="checkbox"/> <b>DECOR</b> |   |                                       |

DELIVERED LUMENS (LM/FT)	WATTS (W/FT)	EFFICACY (LM/W)
See page 5 for complete details.		Up to 98 lm/W

### 4. REMOTE DRIVER (CHOOSE ONE)

- 0/10V/S** 0-10V dimming down to 5% (Standard Dimming – Down to 10% for DECOR)
- 0/10V/1%** 0-10V dimming down to 1%
- 0/10V/0%** 0-10V premium dimming down to 0%
- DALI** DALI flicker-free dimming down to 0%
- DMX** DMX flicker-free dimming down to 0%
- ECOSYS1** Lutron Hi-Lume 1% EcoSystem, constant current or constant voltage
- ECOSYS5** Lutron 5-Series 5% EcoSystem, constant current (Not available with DECOR Lamping)

\*Driver specifications provided upon request to assist with control system integration.


SS110618-A.0



## 5. LENS

- EXT/F** Extra diffuse, flush
- EXT/R** Extra diffuse, reveal

## 6. FINISH (CHOOSE ONE)

- AL** Natural Anodized Aluminum (**Standard Finish**)
- BK** Black Powder Coat
- BRS** Brass Metallic Powder Coat
- SV** Silver Powder Coat
- WH** White Powder Coat
- WH/AM**  White Antimicrobial Powder Coat (for healthcare environments)
- RAL\_\_\_\_\_** Specify RAL Classic Color code (ex: RAL3003) [ralcolorchart.com/ral-classic](http://ralcolorchart.com/ral-classic)

## 7. VOLTAGE (CHOOSE ONE)

- UNV** Universal Voltage (120VAC-277VAC)
- 347** 347 Volt (*Driver options may be limited*)

## 8. ADDITIONAL OPTIONS (OPTIONAL – CHOOSE ONE UNDER A & B, AND ANY UNDER C, IF DESIRED)

### A. EMERGENCY OPTIONS

- EMB/\_\_\_<sup>1</sup>** Emergency Battery (*indicate quantity – each battery powers 4ft with a delivered lumen output of 755lm*)
- EMC/\_\_\_<sup>1</sup>** Emergency Circuit (*indicate quantity of 4ft sections to be illuminated by emergency circuit*)

<sup>1</sup>For fixtures under 4ft in length, entire fixture will be illuminated with a proportional lumen output. Consult ALW for more details.

### B. SENSOR OPTIONS (COMPATIBLE ONLY WITH 0-10V DRIVERS – DEFAULT QUANTITY IS 1 SENSOR PER 8FT, INDICATE ALTERNATE QUANTITY IF DESIRED)

- ENLGHT/\_\_\_<sup>2</sup>** Enlighted® remote smart sensor (*occupancy, daylight, networking, and more*)
- OS/\_\_\_** 0-10V remote occupancy sensor
- PH/\_\_\_** 0-10V remote photocell/daylight sensor

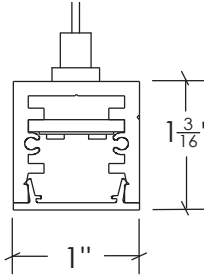
<sup>2</sup>Enlighted® Gateway and Energy Manager (by others) plus programming required. Learn more at [enlightedinc.com](http://enlightedinc.com).

### C. ADDITIONAL OPTIONS (COMPATIBLE ONLY WITH SUSPENDED MOUNT)

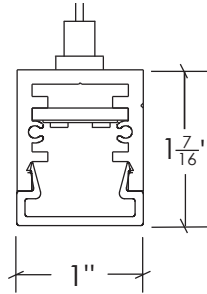
- COMBO** Combination 4.5" canopies at power feed locations to accommodate both power cord and suspension mount hardware.
- SB** Seismic Bracing



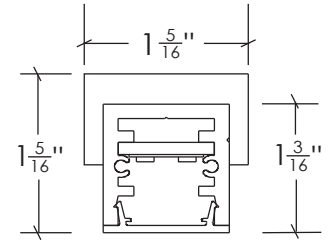
## MECHANICAL DIAGRAMS – MOUNTING & DIMENSIONS



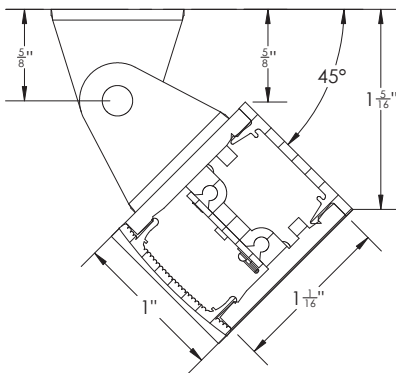
**LP1SD**  
FLUSH LENS (EXT/F)



**LP1SD**  
REVEAL LENS (EXT/R)



**LP1SMB**  
W/ SURFACE-MOUNT BRACKET



**LP1SWW**  
W/ ADJUSTABLE KNUCKLE

## LIGHTPLANE 1 VOLTAGE DROP CHART FOR REMOTE DRIVERS - WHITE LED, 28VDC

The below table should be used as a general guide to calculate the maximum run length between the LED remote driver and canopy dropping power to your fixture. See [alwusa.com/voltage-drop-calculator/](http://alwusa.com/voltage-drop-calculator/) to calculate maximum recommended run length for specific configurations. Please note that the provided values are estimates only, and may vary depending on various factors such as temperature, wire/connector quality, etc. This chart is for single remote driver fixtures – for longer lengths/higher outputs, there may be multiple remote drivers.

WIRE GAUGE	20W 0.61A	30W 0.91A	40W 1.21A	50W 1.52A	60W 1.82A	70W 2.12A	80W 2.42A	90W 2.73A	100W 3.03A
18 AWG	84 ft.	53 ft.	38 ft.	28 ft.	22 ft.	18 ft.	15 ft.	12 ft.	10 ft.
16 AWG	138 ft.	89 ft.	65 ft.	50 ft.	40 ft.	33 ft.	28 ft.	24 ft.	21 ft.
14 AWG	224 ft.	147 ft.	108 ft.	85 ft.	69 ft.	58 ft.	50 ft.	43 ft.	38 ft.
12 AWG	362 ft.	238 ft.	177 ft.	140 ft.	115 ft.	97 ft.	84 ft.	74 ft.	66 ft.
10 AWG	580 ft.	384 ft.	286 ft.	227 ft.	188 ft.	160 ft.	139 ft.	122 ft.	109 ft.

SS110618-A.0



## PERFORMANCE DETAILS – LED LAMPING

OUTPUT	DELIVERED LUMENS (LM/FT)	WATTS (W/FT)	EFFICACY (LM/W)	CRI OPTIONS	CCT OPTIONS
LOW	397	7.2	98	80	3000K 3500K 4000K
MED	529	9.6	93		
HI	661	12	87		
DECOR	194	5.9	43	N/A	
DECOR W/ LP1/MR1	176	4.4	40		

\*Performance calculations are based on LM-79 test of MED output at 80 CRI and 3500K. LOW and HI calculations are extrapolated values.

## SUSPENSION MOUNTING



### CEILING HARDWARE

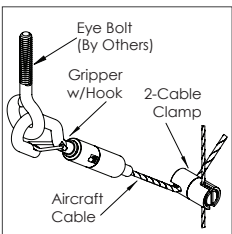
- (1) 4.5" canopy per power feed location,
- (1) bullet mount,
- (1) 8' aircraft cable
- (1) 2" canopy (for use with T-bar mounting) per suspension point



### COMBO CANOPY

Choose option COMBO to specify 4.5" canopies at feed locations with power feed and aircraft cable suspension mounting.

Canopy finish is always white. Contact ALW for alternate colors.



### SEISMIC BRACING

Add-on hardware includes cable gripper with hook, 2-cable clamp and specified length of aircraft cable per suspension point.



## ADDITIONAL OPTIONS & SPECIFICATIONS

### ELECTRICAL PERFORMANCE

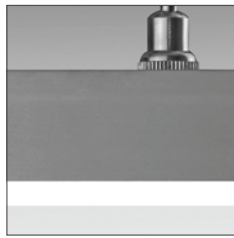
Class 2 LED remote drivers are provided with 10' plenum-rated cable.  $L_{80} > 54,000$  hours. 80+ CRI. Luminous flux +/- 5%.

### LENS

Extruded, twin-layered, high-impact acrylic. EXT is white and extra diffuse with minimal- to no-source visibility.



FLUSH LENS – EXT/F



REVEAL LENS – EXT/R

### HOUSING

100% recyclable, extruded architectural grade 6061 aluminum with a 0.08" minimum wall thickness.

### SAFETY & REGULATORY

ETL Listed (U.S. & Canada). Suitable for dry or damp locations. Conforms to UL std. 2108, Low Voltage Luminaires / Low Voltage Lighting Systems. Certified to CSA std. C22.2#250.0:2008 Ed. 3+G1;G2.

### OPERATING CONDITIONS

Luminaire should be installed and operated ONLY in dry or damp locations where the ambient temperature ranges from -4 °F to 122 °F (-20 °C to 50 °C). Luminaire operation in environments outside the listed temperature range voids the warranty AND may damage the product or adversely impact lamp life, lumen output and color consistency.

### WARRANTY

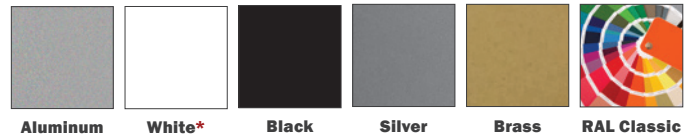
Limited 5-year warranty. Details: [alwusa.com/warranty](http://alwusa.com/warranty)

### SENSOR OPTIONS

Optional, occupancy detection (OS) and/or daylight harvesting (PS) sensor available. Or upgrade to an optional Enlighted® Smart Sensor (ENLGHT) for additional capabilities. Contact ALW for details.

### FINISH

Standard finish is "Ultimate" aluminum — a smooth, clean, and durable finish achieved from a deep etch and two-step clear anodizing process. Other options are shown below.



\*For healthcare environments, a white antimicrobial finish (WH/AM) is also available.